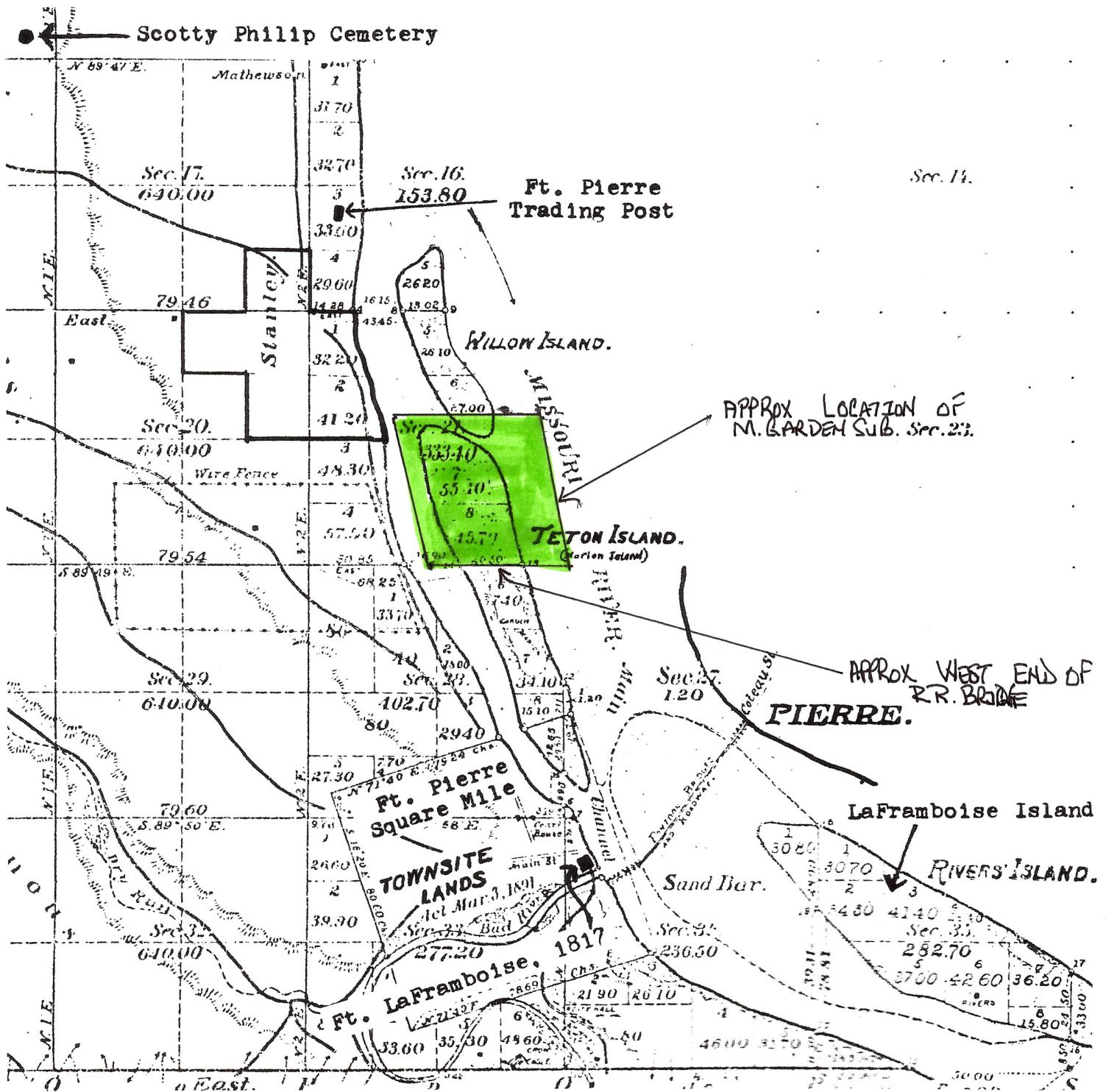


Fred Pettigrew's survey of Fort Pierre Townsite and townships in 1891 for U.S. Surveyor General. (Landmarks added for clarification.) Note town of Stanley below Ft. Pierre trading post.

Teton Island is better known as Marion's Island. Hormidas Marion started a garden on the island about 1881 and later obtained title to the 172-acre island where he and his family lived. He raised fruits and vegetables which he sold in both cities. The west end of the railroad bridge is located between Lot 6 and 8 of Marion's Island, which is now a part of the mainland.

At times the large island on bottom right was called Rivers' Island because a man named Rivers lived there. However, the island was always officially called LaFramboise Island.



Fred Pettigrew's survey of Fort Pierre Townsite and townships in 1891 for U.S. Surveyor General. (Landmarks added for clarification.) Note town of Stanley below Ft. Pierre trading post.

Teton Island is better known as Marion's Island. Hormidas Marion started a garden on the island about 1881 and later obtained title to the 172-acre island where he and his family lived. He raised fruits and vegetables which he sold in both cities. The west end of the railroad bridge is located between Lot 6 and 8 of Marion's Island, which is now a part of the mainland.

At times the large island on bottom right was called Rivers' Island because a man named Rivers lived there. However, the island was always officially called LaFramboise Island.